

**OPERATOR'S
SPARE PARTS &
SERVICE MANUAL**



**Block Cutter
Models M12-50
M12-65**

FAIRPORT
CONSTRUCTION EQUIPMENT LTD

Blagden Street
Sheffield
S2 5QS
England
Tel: +44 (0) 114 276 7921
Fax: +44 (0) 114 272 0965
Email: sales@fairport.uk.com
Website: www.fairport.uk.com

Unit 32
The Bell Centre
Newton Road
Manor Royal
Crawley
West Sussex
RH10 9FZ
Tell +44 (0) 1293 534742
Fax +44 (0) 1293 529056

OPERATING INSTRUCTIONS

- A) Put lever in upright position resting against stop.
- B) Unscrew both adjusting nuts so that the distance between the blades is wider than the thickness of a block.
- C) Slide block to be cut between the blades and screw both adjusting nuts down so that there is even contact along the block.
- D) Turn back both adjusting nuts equally approximately half a turn. Check the handle passes over the adjusting nut at the end opposite the wheels.
- E) Push lever down to cut the block.
- F) The adjustment is now set for all blocks of the same size.
- G) When moving the block cutter, drop handle to ground, turn adjusting nut opposite wheel end so that the 'T' is across machine. When the handle is raised it will lift the end of the machine off the ground.
- H) Do not drop the machine as this may cause damage to the wheels and axle.
- I) Clean the machine regularly. Apply grease to the adjusting screw threads. If replacing the bearings or eccentric bosses these should be coated with moly-graphite grease such as Castrol BM2.
- J) The blades are triangular and may be repositioned when one edge wears out.

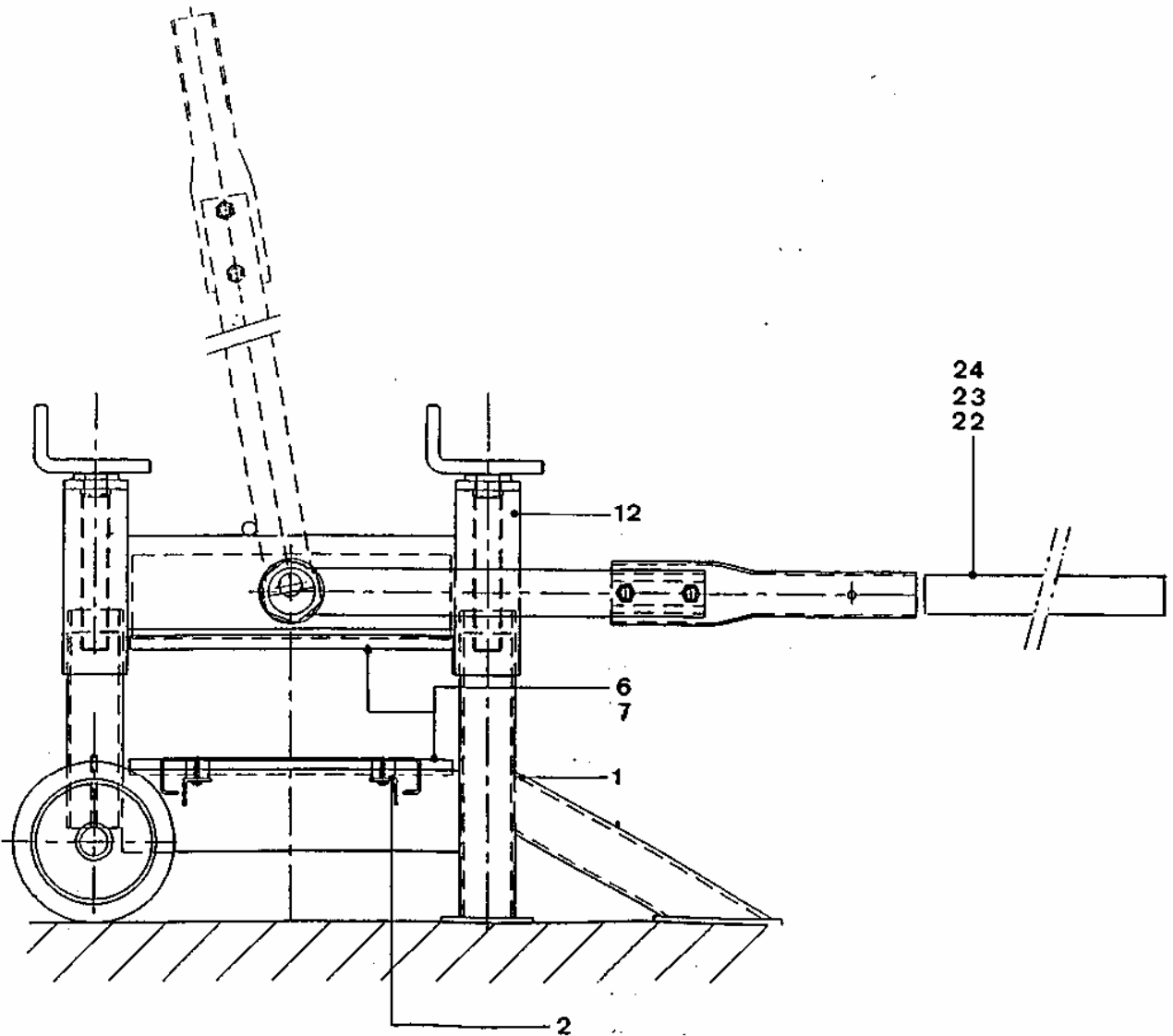
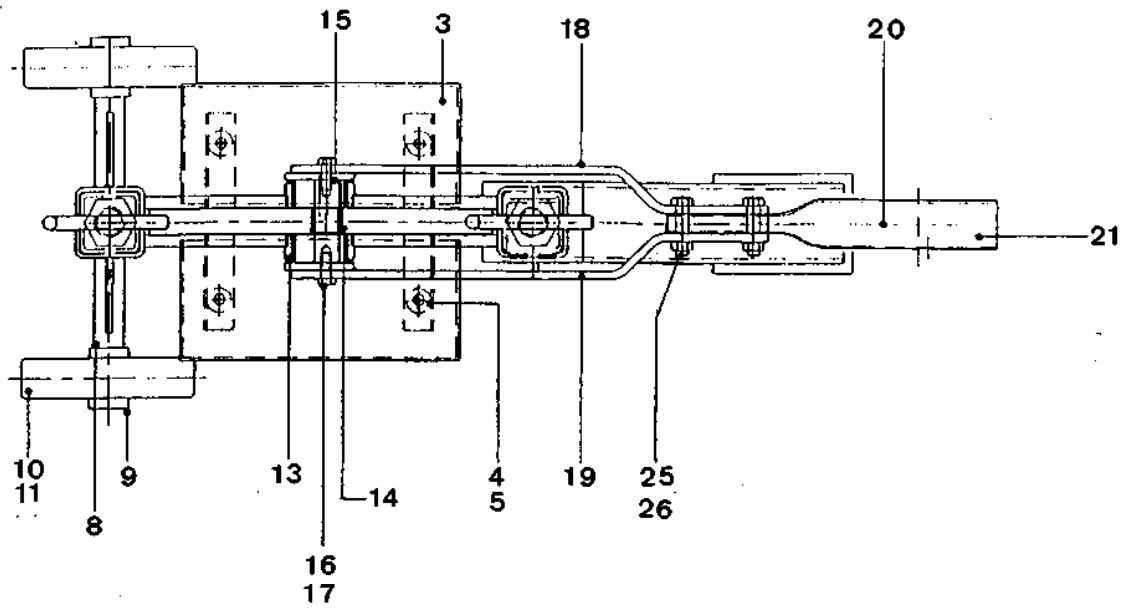
SAFETY

Wear gloves, eye protection and safety boots. Comply with site safety regulations.

PARTS LIST

<u>Item No</u>	<u>Part No</u> <u>M12-50</u>	<u>Part No</u> <u>M12-65</u>	<u>Description</u>
1	N-757.176.1501	N-757.176.1601	Lower frame
2	N-093.176.0809	N--093.176.0809	Rubber mount
3	N-757.176.0923	N757.176.0924	Table left/Table right
4	435/8/30	435/8/30	M8 bolt for table
5	480/8	480/8	M8 Nyloc nut
6	N-57.176.0297	N-757.176.0298	Bottom blade/Top blade
7	N-673.352.2075	N-673.352.2075	Special M6 bolt for blade
8	N-757.176.1004	N-757.176.1004	Wheel axle
9	N-093.176.0119	N-093.176.0119	Wheel axle cap
10	N-093.276.1212	N-093.276.1212	Wheel
11	418/20	418/20	M20 plain washer
12	N-757.176.1502	N-757.176.1602	Top frame c/w adjusting screws
13	N-093.176.0901	N-093.176.0901	Plain bearing
14	N-093.176.0903	N-093.176.0903	Needle bearing
15	N-757.176.1005	N-757.176.1005	Lever pin
16	435/10/25	455/10/25	M10 bolt for lever/lever pin
17	439/10	439/10	M10 star washer
18	N-757.176.1503	N-757.176.1603	Lever right
19	N-757.176.1504	N-757.176.1604	Lever left
20	N-757.176.1505	N-757.176.1505	Handle
21	N-093.176.0904	N-093.176.0904	Plastics cap (if fitted)
22	N-757.176.0141	N-757.176.0141	Handle extension (optional extra)
23	N-93.176.0175	N-093.176.0175	Handle extension cap
24	N-757.176.0158	N-757.176.0158	Spring clip for handle extension
25	435/12/50	435/12/50	M10 bolt for lever/handle
26	480/12	480/12	M10 Nyloc nut

PARTS DIAGRAM



WARRANTY CONDITIONS AND CLAIMS PROCEDURE

All products supplied by Fairport Construction Equipment Ltd (hereafter referred to as FCE) are warranted to be free of defects due to faulty materials or workmanship for a period of 12 months from the date of original despatch from FCE or as specified below:

Hydraulic hoses and hydraulic couplings – 3 months.

Hydraulic accumulators – 6 months.

Flexible drives – 6 months.

All spare parts used in repairs carried out by FCE or an authorized dealer or repairer – 3 months.

If the goods have been purchased through a stockist the above warranty periods also apply from receipt of the goods by the user of the equipment up to a total of a further 6 months from date of despatch from FCE whichever is earlier.

Filter elements, gauges and oils are specifically excluded from this warranty.

FCE shall at their option repair or replace during normal working hour's goods accepted as faulty free of charge to the user.

For proprietary items such as engines, the original manufacturer's warranty and conditions shall apply.

CONDITIONS

The goods shall be returned at the purchaser's expense to FCE or to a destination FCE may reasonably direct. Carriage costs will be refunded if warranty is accepted.

Warranty claims will not be considered where there is evidence that failure has been caused by carelessness, improper use, negligence, inadequate servicing, incorrect engine speeds, fair wear and tear or non-compliance with instructions issued by the manufacturer.

To the extent permitted by law, the liability of FCE under this section is confined only to providing a remedy for defective goods and does not extend to any consequential loss, loss of profit, injury or damage suffered.

Warranty will not be accepted on dismantled goods unless dismantling was carried out with the written permission of FCE.

No claim shall be considered if other than genuine parts supplied by FCE have been used.

Products are only covered by this warranty in the country to where they were supplied by FCE.

Warranty on products applies only to the original user of the equipment.

This warranty shall not apply if the serial number or other identifying numbers or marks applied by FCE have been removed, defaced or are otherwise illegible.

CLAIMS PROCEDURE

Check that the goods are still under warranty before returning them to FCE (see above for warranty periods).

Return the goods to FCE with an order number for the work to proceed. If warranty is accepted no charge will be made. If warranty is not accepted a quotation will be given for the repair and the conditions under the section headed REPAIRS AND ESTIMATES will apply.

In the customer's interest, goods must be accompanied by documentation detailing the nature of the fault or its symptoms. Phrases such as 'Faulty' are unacceptable and will result in delays and possible charges to defray costs incurred in identifying the fault.

In the case of hydraulic breakers and power packs, both the breaker and the pack should be returned

REPAIRS AND ESTIMATES

When returning a machine, or an assembly for repair, always include an Advice Note quoting model and serial number of the machine.

An official order must also be forwarded to FCE giving detailed instructions. No repair work can be carried out unless covered by an official order.

An estimate will be submitted before proceeding with any repair. To partly cover the cost in dismantling, cleaning and inspection, a small charge will be made; this however will be waived upon receipt of your official instructions to proceed with the repair.

In the event of the estimate not being accepted, a further charge will be made to defray the rebuilding of the machine.

Estimates must be treated as approximate only as it may be found necessary to use additional parts on further examination.